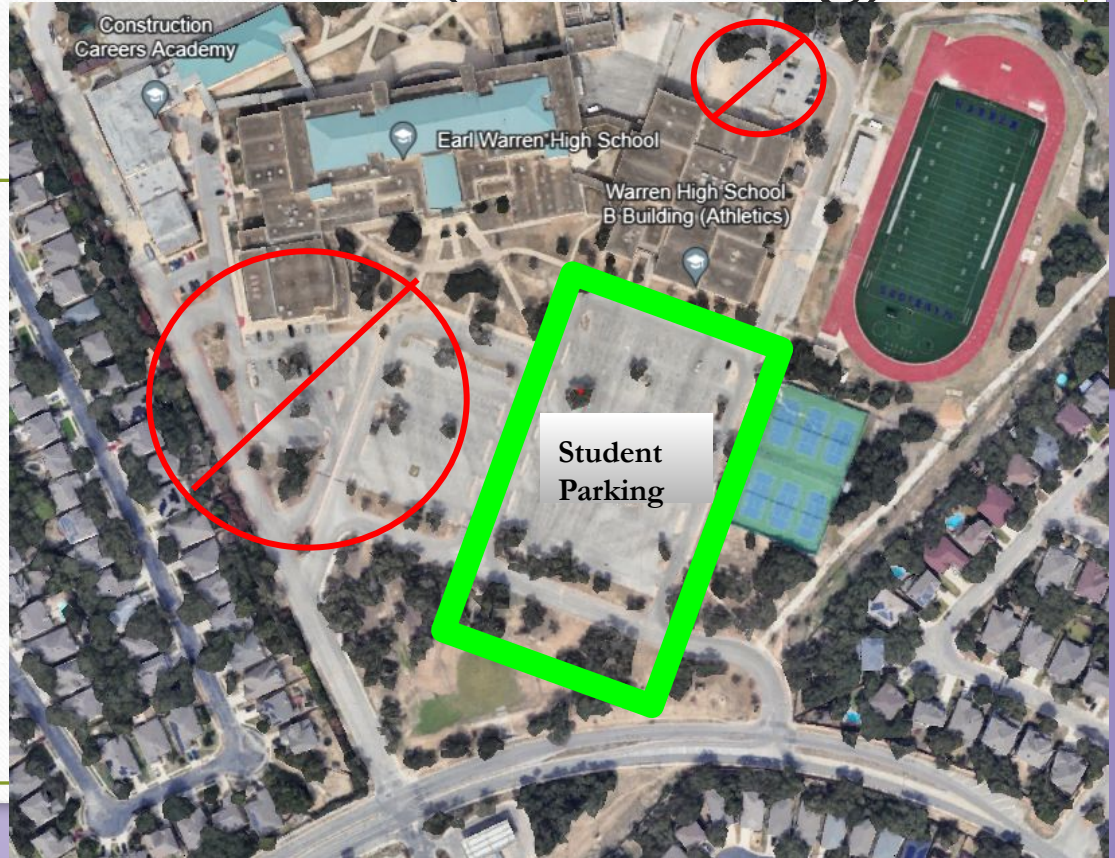


STUDENT PARKING (B Building)

Students are only allowed to park in the Student Lot in front of the B-building.

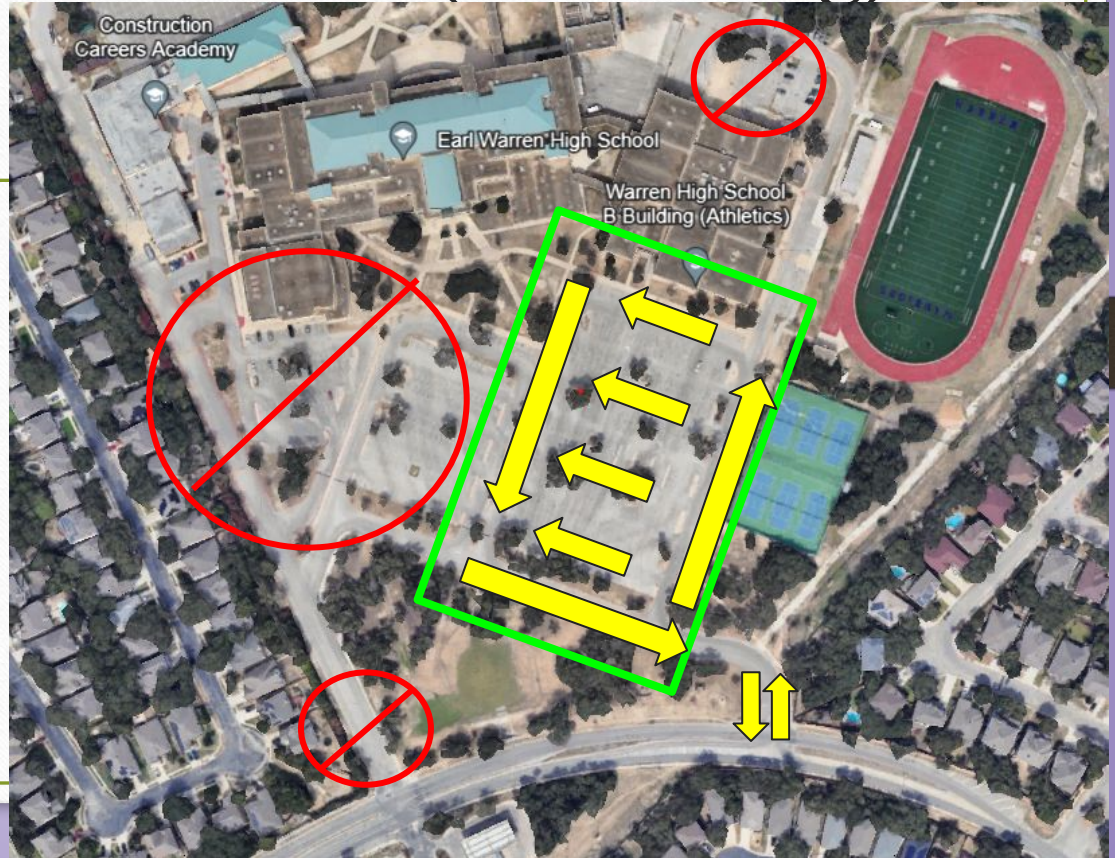
Students MUST have a Warren Parking Permit valid for the current school year.

Parking in unauthorized areas or without a valid parking permit will result in ticket fines, booting, or towing of the vehicle at the owner's expense.



STUDENT PARKING (B Building)

BEFORE AND AFTER SCHOOL all students must enter and exit from the SW entrance off of **Military Drive** by the tennis courts.



STUDENT PARKING (B Building)

BETWEEN THE HOURS OF 10:00 AM - 3:00 PM the tennis court entrance/exit will be closed. Students must enter and exit the school from Military Drive using the entrance stoplight across from Walmart.



STUDENT Before School Dropoff/ After School Pickup

